

Research Week 2019

Monday 7 October 2019

Grand Opening and Guest Speaker

12.30 pm – 1.30 pm

NCHER, Level 1, Lecture Theatres 1 and 2

Prof. Helena Teede

Topic: Creating a learning health system to meet clinical and community needs: it's everyone's job

Workshop

2.00 pm – 4.00 pm

NCHER, Level 3, Conference Room 3.1

Prof. Helena Teede

Topic: Flipping the paradigm - how research can support community, clinical and health service needs and innovation to drive health impact.

Tuesday 8 October 2019

Chief Executive Ideas Lab

12.30 pm – 2.00 pm

NCHER, Level 3, Ideas Lab

Topic: How do we ensure research and innovation underpins everything we do?

Oral Presentation Session 1

2.30 pm – 3.30 pm

TNH Lecture Theatre

Wednesday 9 October 2019

Oral Presentation Session 2

10.00 am – 11.00 am

TNH Lecture Theatre

Poster Viewing

12.30 pm – 1.30 pm

TNH Foyer and Main Corridor

Guest Speaker

2.00 pm – 3.00 pm

TNH Lecture Theatre

Professors Jan Nicholson and Helen McLachlan

Topic: From evidence to implementation: promoting the health of women and children

Guest Speaker

3.30 pm – 4.30 pm

PCW Conference Room BECC

Dr Adam Semciw

Topic: Factors associated with research interest, confidence and experience in allied health clinicians.

Thursday 10 October 2019

Grand Round

8.00 am – 9.00 am

NCHER, Level 1, Lecture Theatre 1

Prof. Rachelle Buchbinder

Topic: The medicalisation of low back pain and how it contributes to low value care

Great Debate and Awards Ceremony

12.30 pm – 1.30 pm

NCHER, Level 1, Lecture Theatre 1.

Topic: Meat is Evil – Should everyone have a vegetarian diet?

Statistics Session

3.00 pm – 4.00 pm

NCHER, Level 1, Lecture Theatre 1.

Mark Tacey

Topic: Sample Size and Power Estimation: where do I start?'

Friday 11 October 2019

Masterclass

1.00 pm – 5.00 pm

NCHER, Level 3, Conference Room 3.1

MedTech Actuator Education Program

Prof Helena Teede

Topic: 'Creating a learning health system to meet clinical and community needs: it's everyone's job'

The community are the funders and beneficiaries of health care and of research and our frontline workforce and health services are the powerhouse behind healthcare. Our community, health care providers and health services deserve a core role in priority setting, design and delivery of research and translation to deliver health impact in Australia. How do we deliver this together with the support of research, evidence and translation?

Biography:

Prof Teede is Executive Director of Monash Partners Academic Health Sciences Centre where she is passionate about research translation and driving better health through research. She is also the director of the Monash Centre for Health Research and Implementation, School of Public Health, Monash University. She is an Endocrinologist at Monash Health and an NHMRC Practitioner Fellow. Prof Teede has a leading role in research and translation. She holds policy advisory roles, has been a member of NHMRC Research Committee, Health care committee and the Faculty for Research Translation. She has over 450 publications and focuses on women's reproductive health, is on the Cochrane editorial group, has over 60 systematic reviews, has worked on multiple guidelines including with WHO and recently led international guidelines involving 37



organisations and 71 countries.



Prof Helena Teede - Workshop

Topic: 'Flipping the paradigm - how research can support community, clinical and health service needs and innovation to drive health impact.'

How can a health service drive and deliver a learning health system with evidence based quality care and ongoing improvement?

Work through the steps in a learning health system from how to best engage our community and health professionals to generating and synthesising evidence to using evidence and guidelines, to measurement of best practice, to feedback and benchmarking, implementation and quality improvement.

[Please register to attend via the Eventbrite link.](#)

Biography:

Prof Teede is Executive Director of Monash Partners Academic Health Sciences Centre where she is passionate about research

translation and driving better health through research. She is also the director of the Monash Centre for Health Research and Implementation, School of Public Health, Monash University. She is an Endocrinologist at Monash Health and an NHMRC Practitioner Fellow. Prof Teede has a leading role in research and translation. She holds policy advisory roles, has been a member of NHMRC Research Committee, Health care committee and the Faculty for Research Translation. She has over 450 publications and focuses on women's reproductive health, is on the Cochrane editorial group, has over 60 systematic reviews, has worked on multiple guidelines including with WHO and recently led international



guidelines involving 37 organisations and 71 countries.

Prof Richard Gray

Topic: 'Nursing skill mix: does it really make a difference?'

Nursing skill mix refers to the number, type and educational preparation of nurses. There are a number of studies that have demonstrated a clear association between nursing skills mix and patient outcomes. However, there are important methodological limitations to many of these studies that need to be considered when appraising this body of work. In this presentation I will discuss these methodological challenges and consider how these may be overcome.

Biography:

Professor Richard Gray RN BSc (Hons) MSc DLSHTM PhD (Lond.) FRSPH

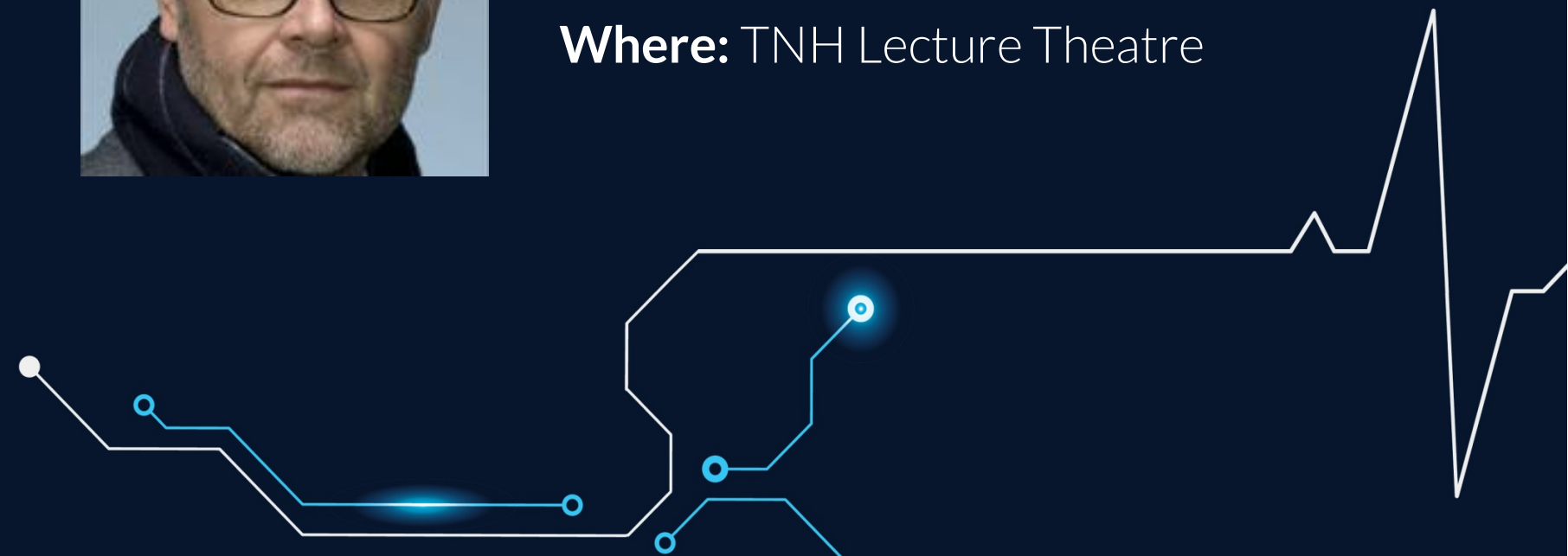
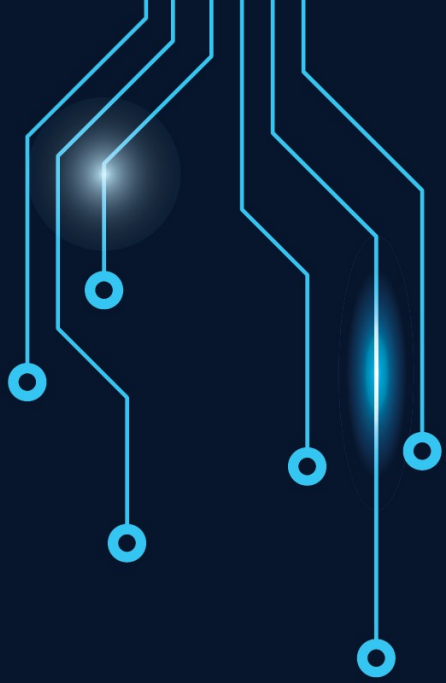
Richard Gray is Professor of Clinical Nursing Practice and Director of the Alfred Clinical School at La Trobe University, Melbourne, Australia. He trained in Nursing at King's College in London and in Public Health at the London School of Hygiene and Tropical Medicine. Richard's major academic interests are psychosocial interventions and workforce research. He has \$15m AUD in grant income, completed 15 clinical trials and published 190 papers in peer-reviewed journals.



Date: Wednesday 9th October 2019

Time: 2pm - 3pm

Where: TNH Lecture Theatre



Dr Adam Semciw

Topic: 'Factors associated with research interest, confidence and experience in allied health clinicians'

Dr Semciw will provide a brief overview of his research journey on hip pain, from basic science research through to clinical trials. He will then discuss factors associated with research interest, confidence and experience among allied health clinicians, and how this knowledge can be used to develop strategies to foster research engagement among clinician researchers.

Biography:

Dr Semciw has over 40 publications spanning his major research interests of muscle function, rehabilitation and exercise management of lower limb musculoskeletal conditions, including osteoarthritis. His research comprises basic science and laboratory studies, which has informed his further work in clinical trials, systematic reviews and cohort studies. Dr Semciw is considered an international expert on the hip, and hip pain. He is ranked number 12 in the world and second in Australia for research on gluteals (Expertscape, April 2019); and ranked 7th in Australia for research on the 'hip joint' (Expertscape, April 2019). More recently Dr Semciw has gained qualifications in Epidemiology, and takes in interest in building research capacity among clinician researchers.



Date: Wednesday 9th October 2019

Time: 3.30 – 4.30 pm

Where: PCW Conference Room BECC

Prof Rachele Buchbinder

Topic: “The medicalisation of low back pain and how it contributes to low value care’

While medical care brings benefits for many, there is accumulating evidence that unnecessary healthcare including overtesting, overdiagnosis and overtreatment is a growing problem. Not only may it harm people, it diverts scarce resources from those that need it most and may be the most important contributor to healthcare waste in Australia and the world.

Biography:

Rachele Buchbinder is an Australian NHMRC Senior Principal Research Fellow, rheumatologist and clinical epidemiologist. She is the Director, Monash Department of Clinical Epidemiology, Cabrini Institute and Professor, Department of Epidemiology and Preventive Medicine, Monash University. Her other roles include Coordinating Editor, Cochrane Musculoskeletal and current Chair, Australia & New Zealand Musculoskeletal (ANZMUSC) Clinical Trial Network.

Her current program of work concerns reducing inappropriate or low value care and improving the sustainability of the health system. Most recently she contributed to The Lancet Low Back Pain Series (www.thelancet.com/series/low-back-pain), a call to action to address the rising global burden of low back pain partly attributable to poor quality health care.



Date: Thursday 10th October 2019

Time: 8.00 – 9.00 am

Where: Lecture Theatre 1 - Level 1 NCHER Building





Northern Health Research Week 2019


Statistics Session with Mark Tacey

Topic: 'Sample Size and Power Estimation: where do I start?'

For the effective conduct of a research study, sample size calculations prior to the beginning of the study are required.

A study with an adequate sample size will ensure that a statistically significant effect can be identified if a clinical improvement is also observed. This seminar will provide an overview of the concepts relating to sample size estimation, including the description of inputs to the process and variations based on study design.

Mark Tacey, Biostatistician, re-joined Northern Health in 2018 to provide statistical analysis support for Northern Health staff and students on their projects conducted at Northern Health. Mark is also currently employed by Austin Health working within the Department of Radiation Oncology. Mark has previously worked for the Centre of Cardiovascular Research and Education at Monash University and with the Melbourne EpiCentre at Royal Melbourne Hospital as part of a joint position with Melbourne Health and University of Melbourne. Prior to moving into the health industry 9 years ago, Mark worked as a statistician and senior research analyst within the traffic and transport industry. Mark has expertise in providing advice in relation to study design and sample size estimation, the appropriate collection of study data and can provide assistance or advice relating to statistical analysis using a range of statistical analysis software.



3pm - 4pm

Thursday 10th October 2019

NCHER Lecture Theatre 1

Northern Health

Research Week 2019

The Northern Health Office of Research would like to thank our sponsors for supporting Northern Health Research Week 2019!

Northern Health
Foundation



LA TROBE
UNIVERSITY

